



OLIVIA BARRY

BIO

Olivia Barry is an artist/designer based in the Hudson Valley, NY. Originally from Canada, she was raised in the 70's by a painter and an engineer in the eclectic and creative community of Toronto Island. After studying Industrial Design and Ceramics at the College for Creative Studies in Detroit, Michigan, Olivia moved to New York City to work for the inimitable ceramics designer Eva Zeisel.

Relocating to Tarrytown in 2018, Olivia created her own ceramic studio and practice, experimenting and pushing the material to limits beyond craft. Invention-driven and defying tradition, Olivia creates Luminaires in sculptural forms that cast soft, reflected light.

In addition to her lighting collections, Olivia creates sculptural ceramic artwork in the form of large circular Tondos (a Renaissance term for round paintings). Installation commissions have included the Swan Restaurant in Orlando and the British Airways Executive Lounge at JFK.

ARTIST'S STATEMENT

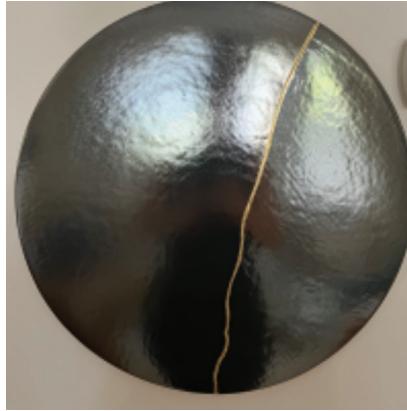
With clay as my canvas and glaze as my paint, I create large "ceramic paintings", taking the medium out of its traditional place at the table and finding space for a new approach, on the wall. The pieces are abstract and tantric, in the sense that they are tranquil, meditative and moody. Mirror-like glazes reflect light and movement and present an ever-changing canvas. Unorthodox glazing techniques result in unexpected textures and imagery.

Her work can be seen at www.OliviaBarryByHand.com

OLIVIA BARRY



Wake
2021
Ceramic, glaze
Ø19"
\$500



Re-Vision
2022
Ceramic, glaze, gold Foil
Ø19"
\$500



Half Moon
2023
Stoneware, glaze
Ø19"
\$1,500



December Moon
2023
Stoneware, glaze
Ø19"
\$1,800



January White Moon
2024
Ceramic, glaze
Ø19"
\$1,500



December Black Moon
2024
Ceramic, glaze
Ø19"
\$1,500

OLIVIA BARRY



Moon Phases

2024

Stoneware, glaze

Each Ø19"

\$7,500



Illuminated Leaf Sconce

2024

Ceramic, glaze

LED dimmable bulb & components.

Hardwired or plug-in available. UL-listed.

19" x 12"

\$2,100



PERNEL BERKELEY

BIO

After Bennington and School of Visual Arts, Pernel Berkeley began painting in New York. She creates works on shaped wood panels (one or more pieces) in acrylic. The sculptural quality sets up an interplay of form and pattern, color and texture, constituting a unique visual language.

Reflecting a range of interests stemming from an early fascination with the Bauhaus Movement, another chief source of inspiration involves a wide variety of non-Western art forms blended with traditional artistic concerns, resulting in works evincing a visually spiritual dimension.

Pernel participated in group shows including the juried exhibition at Viridian Artists in New York and an online exhibition curated by Artists Space.

ARTIST'S STATEMENT

My work has consistently been directed by a desire to create a visual language which reflects a range of interests. A youthful fascination with the Bauhaus Movement exerted a lasting influence on my development as an artist, as well as serving to inspire me to find my own path. Although forms I choose continue to evolve, the use of color is fundamental to all my work. Combined with choices concerning the impact and interactions of shape and form, I have attempted to produce an original and unique visual language. Over the years, guided by this principle, I believe I have found a method of producing works which are thought-provoking and engaging visual experiences.

Her work can be seen at www.pernelberkeley.com.

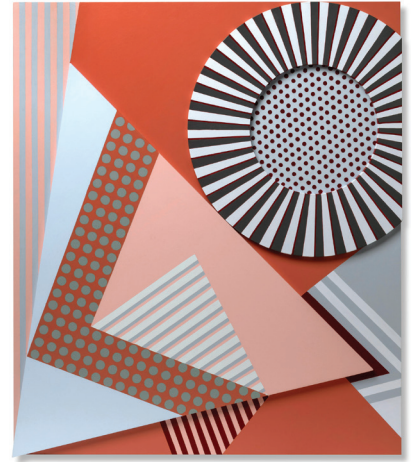
PERNEL BERKELEY



Intrusive Thoughts
2023
Acrylic on wood panels
38" x 32"
\$2,500



Tilt-A-Whirl
2024
Acrylic on wood panels
34" x 29"
\$2,500



Developing Story
2024
Acrylic on wood panels
36" x 31"
\$2,500



Alternate Routes
2024
Acrylic on wood panels
38" x 32.5"
\$2,500



Above Us Only Sky
2024
Acrylic on wood panels
47" x 39"
\$2,000



MAXINE DAVIDOWITZ

BIO

Maxine Davidowitz' career as a painter began in 2008 after a successful 30+ -year stint as a magazine creative director for national consumer magazines: among them Redbook, TV Guide, Parents, Health, More and Modern Farmer. Rather than return to school for an MFA, Maxine chose to study with various artists whose work I admired, taking workshops in many locations around the world with Annie Lapin, Claire Sherman, Donald Elder, Ilana Manolson, Kate McGloughlin, Nuala Clarke and others.

ARTIST'S STATEMENT

My work has evolved from an initial exploration of translucent figures in landscapes to a more intuitive and abstract response to the natural world. My goal is to create imagery with mood, ambiguity and richness, balancing opposing forces: smooth vs textured surfaces, flat vs dimensional space, man-made vs. organic shapes, neutral vs. vibrant hues, light vs. deep values, transparency vs. opacity. I use smooth substrates—Yupo paper or gessoed hardboard panels—and a wide variety of tools to mine as many delicious possibilities of the effect of paint on surface. The deep box panels I work on give the pieces a quality of 'thing-ness', acting more as created objects than pictures. The works are usually layered, scraped back, and layered again as I find the composition with a combination of intention and accident, control and chaos. Recent work contrasts this chaos with large, hard-edged areas of brilliant or metallic color, and has turned into a series dedicated to environmentally challenged regions (see recent paintings, the Terra Infirma series). My practice includes printmaking—mostly monotypes—which offer a way to explore further ideas for paintings, and collages made from recombining monotypes or painted papers. My involvement in the vibrant art community of Woodstock and the Hudson Valley currently includes chairing the board of WAAM (Woodstock Artists Association and Museum) which feeds my practice as well as my soul.

Her work can be seen at www.maxinedavidowitz.com.

MAXINE DAVIDOWITZ



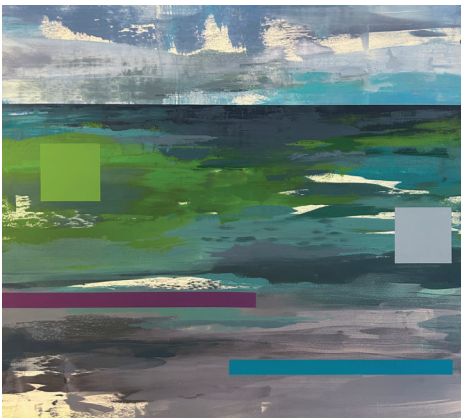
Mountain
Acrylic on canvas
30" x 30"
\$2,500



Pond Elegy 1
Acrylic on canvas
30" x 30"
\$2,500



Pond Elegy 2
Acrylic on canvas
30" x 30"
\$2,500



When the Seas Receded
Acrylic on canvas
30" x 30"
\$2,500



Grasses Elegy/Dyptich
Acrylic on two panels
Each 12" x 12"
\$1800 for both



ADAM SHULTZ

BIO

Adam Shultz was born and raised in Indiana. He studied at Savannah College of Art Design, graduating in 1992 with a BFA in painting. He did extensive coursework in art history, photography, and aesthetics philosophy. He moved to the NYC area in 1994, living and working in various artist quarters in the East Village, Chelsea, Lower East Side, DUMBO, and Williamsburg.

Adam has maintained a studio in Yonkers at YOHO Artists community within the greater Carpet Mills Arts District since 2008, after a long hiatus from fine art practice. At YOHO, Adam is the prime artist-resident organizer of the annual Spring YOHO Artists Open Studio weekend.

Adam has been involved in the Yonkers Arts non-profit since 2013, serving as corporate Secretary and Vice President and current Co-President/Treasurer, leading the organization to 501(c)3 nonprofit status. He interfaces heavily with the City of Yonkers on activities related to both Yonkers Arts and YOHO, meeting regularly with city officials. Adam was instrumental in the development and organization of the inaugural Yonkers Arts Weekend, May 3-4, 2014, as sponsored by City of Yonkers, Mayor Spano's office. Adam continues to be involved in the annual Yonkers Arts Weekend, personally developing up to a third of the total content onto the city-wide arts festival through work with YOHO Artists, Yonkers Arts, and the Carpet Mills Arts District coalition.

In 2014-2015, Adam was instrumental in a coalition group of building owners and artist stakeholders, in cooperation with the City of Yonkers, in development of what is now known as the Carpet Mills Arts District within the Nepperhan Valley just outside of downtown Yonkers, NY. This special zoning district was established to allow certain retail operations to exist next to manufacturing businesses, with the intent to better visibly market the area to artists and creatives seeking better rents around the greater metropolitan area of New York City. The Carpet Mills Arts District is an expansive Victorian era industrial area comprising dozens of buildings dedicated to the production of carpet up until the 1950's. Yonkers Arts is positioned to take a leading role in the stewardship of the arts district.

Adam's personal creative work is multi-disciplinary, working on several different, distinct, and intensive series concurrently. He is working on a new series of paintings involving the piling of multiple layers of paint, each painting comprising nearly 15,000 layers of paint. Other projects include a sculptural series and an ongoing exploration of the digital age through a variety of traditional mediums.

His work can be seen at www.adamshultz.com.

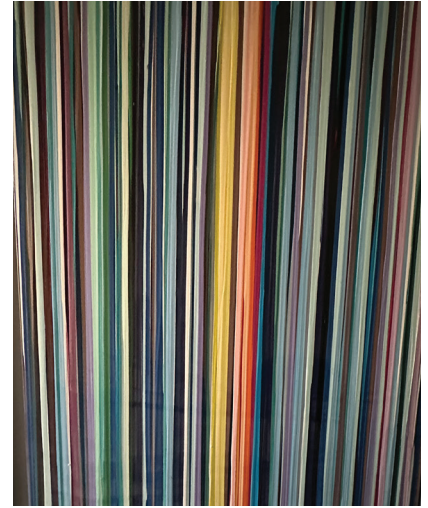
ADAM SHULTZ



PURPLE #4 (on black)
2010
Enamels on board
42" x 32"
\$1,200



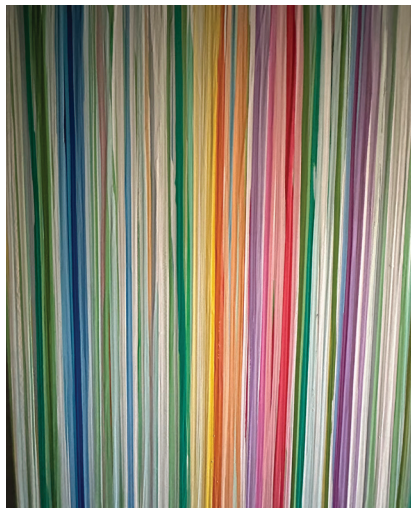
GREEN #3 (on black)
2010
Enamels on board
42" x 32"
\$1,200



BLUE #2 (on black)
2010
Enamels on board
42" x 32"
\$1,200



YELLOW #2 (on white)
2010
Enamels on board
42" x 32"
\$1,200



GREEN #1 (on white)
2010
Enamels on board
42" x 32"
\$1,200



PURPLE #3 (on black)
2010
Enamels on board
42" x 32"
\$1,200